



taiwanexcellence.org/th

TAIWAN EXCELLENCE PAVILION

IN THAILAND

@ ASSEMBLY & AUTOMATION
TECHNOLOGY 2019

Hall 98 8H11, Bangkok International Trade & Exhibition Centre



**TAIWAN
EXCELLENCE**



TAIWAN

Smart Machinery

Shaping the Future



HIWIN.



Moldex3D®

PALMRY



SOLOMON



TOYO



Organized by



Bureau of Foreign Trade, MOEA



Taiwan External Trade Development Council



CONTENT

p. 01

ABOUT
TAIWAN

p. 12

ABOUT
US

p. 15

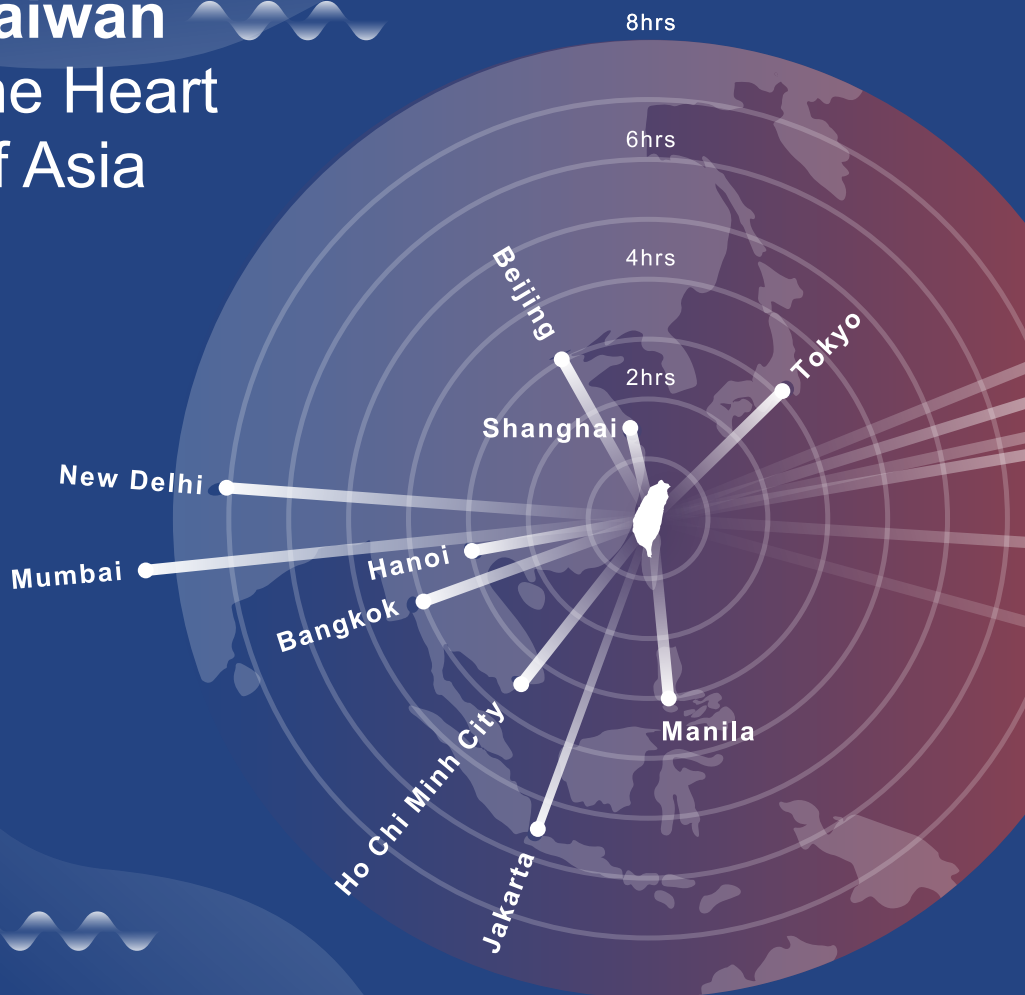
EVENT
CALENDAR

p. 16

PRODUCTS

Taiwan

the Heart of Asia



- Asia
- Europe
- America

About Taiwan

■ Landmark

Taipei 101
(The 10th tallest
building in the world)

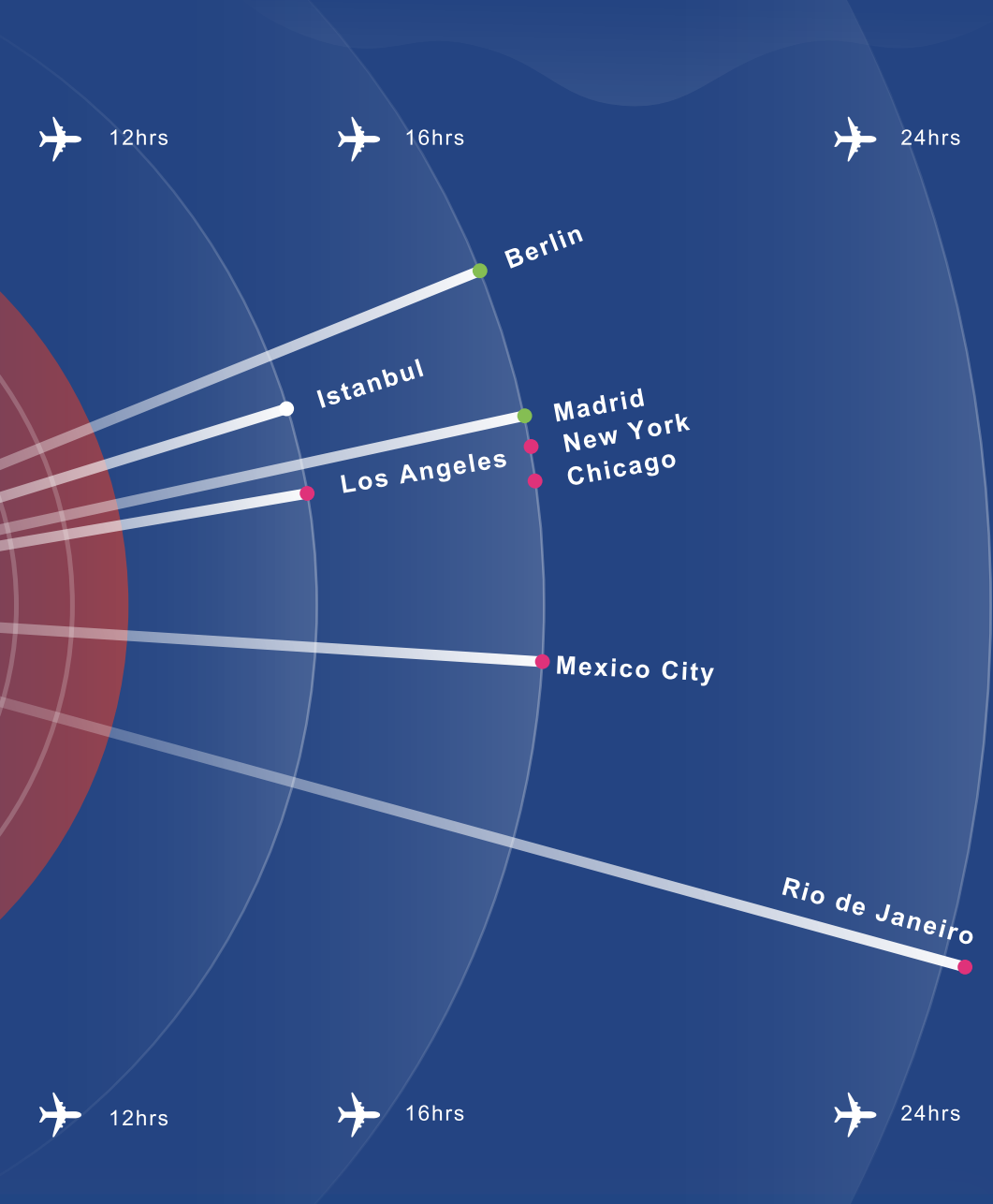


■ Climate

Tropics
Subtropics

■ Area

36,197 km²
(Ranked 139th)



■ Ethnicity

■ Population



95.5% Han Taiwanese/ Hakka/ Hoklo
2.3% Indigenous People
2.2% New Immigrant

23.58 million
(Ranked 56th)



Taipei

Taoyuan

Hsinchu

Taichung

Tainan

Kaohsiung



Asia
Silicon Valley



Smart
Machinery



Green
Energy



Biotech &
Pharmaceutical



National
Defence



Smart
Home



Smart
Energy



Smart
Retail

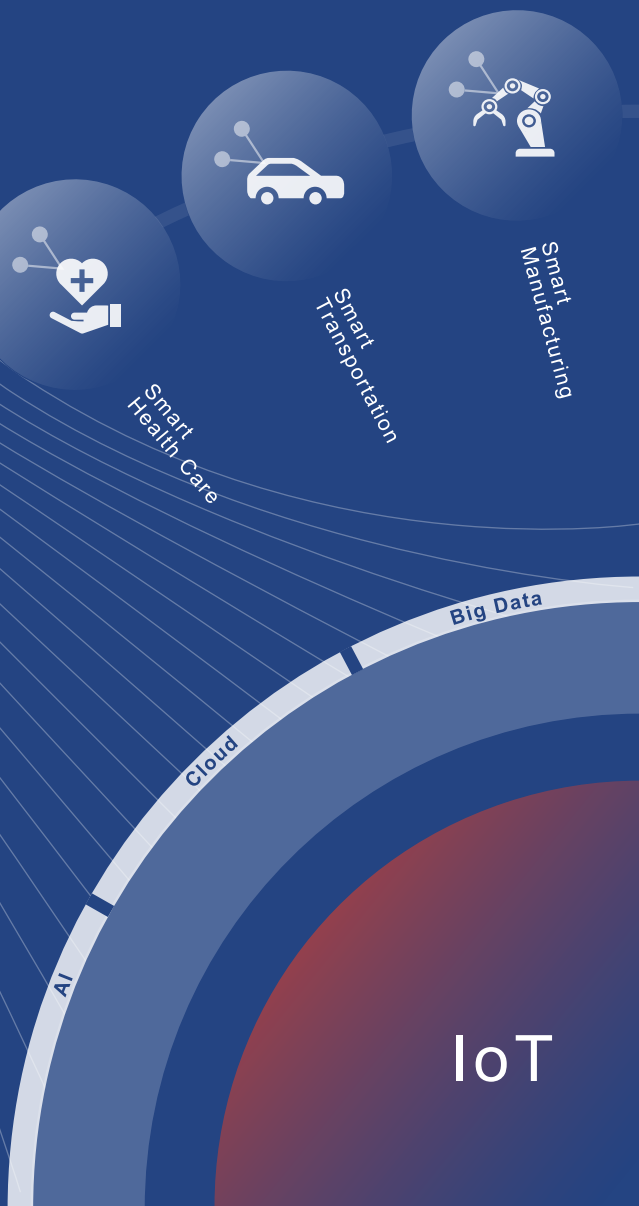


Smart
Security

5 Major Innovative Industries Policy

Application
of Industrial
Internet of Things

Applications of Innovative Industries Policy & IoT System



Taiwan's advantage in Intelligent System

Taiwan has the advantage in developing AI/smart system with supporting policies, intellectual and complete industrial cluster. With the government supporting, Asia Silicon Valley Development Plan as an integrated platform is intended to guide the transformation of Taiwan innovative economy. The plan establishes an IoT Industry Major League team, led by manufacturers such as Acer, Advantech and Mediatek with over 400 businesses and startup companies forming an industry ecosystem.



NCTU-Cradle of Tech talents



Hsinchu Science and Industrial Park- ICT Cluster



ASVDA- A government supported integrated platform



Taiwan's first self-driving bus by ASVDA

Taiwan Economy

Primary Export Destinations

(unit : US \$)

■ Total
Import
Value

287 billion

Ranked 18th

■ Total
Export
Value

336 billion

Ranked 19th

European
Union

8.8%

Others

9.2%

Economic Statistics

(unit : US \$)

Source: Ministry of Finance,
WTO, IMF, National Statistics

■ GDP Growth Rate



2.66%
(2018)

■ PPP



51,865
(Ranked 20th)

■ GDP



588 billion
(Ranked 23rd)

■ GDP/ Capita



24,889
(Ranked 19th)

■ Innovation Capability

4th

Taiwan is ranked 4th in "Innovation Capability" in The World Economic Forum's "Global Competitiveness Report 2018".

■ Doing Business

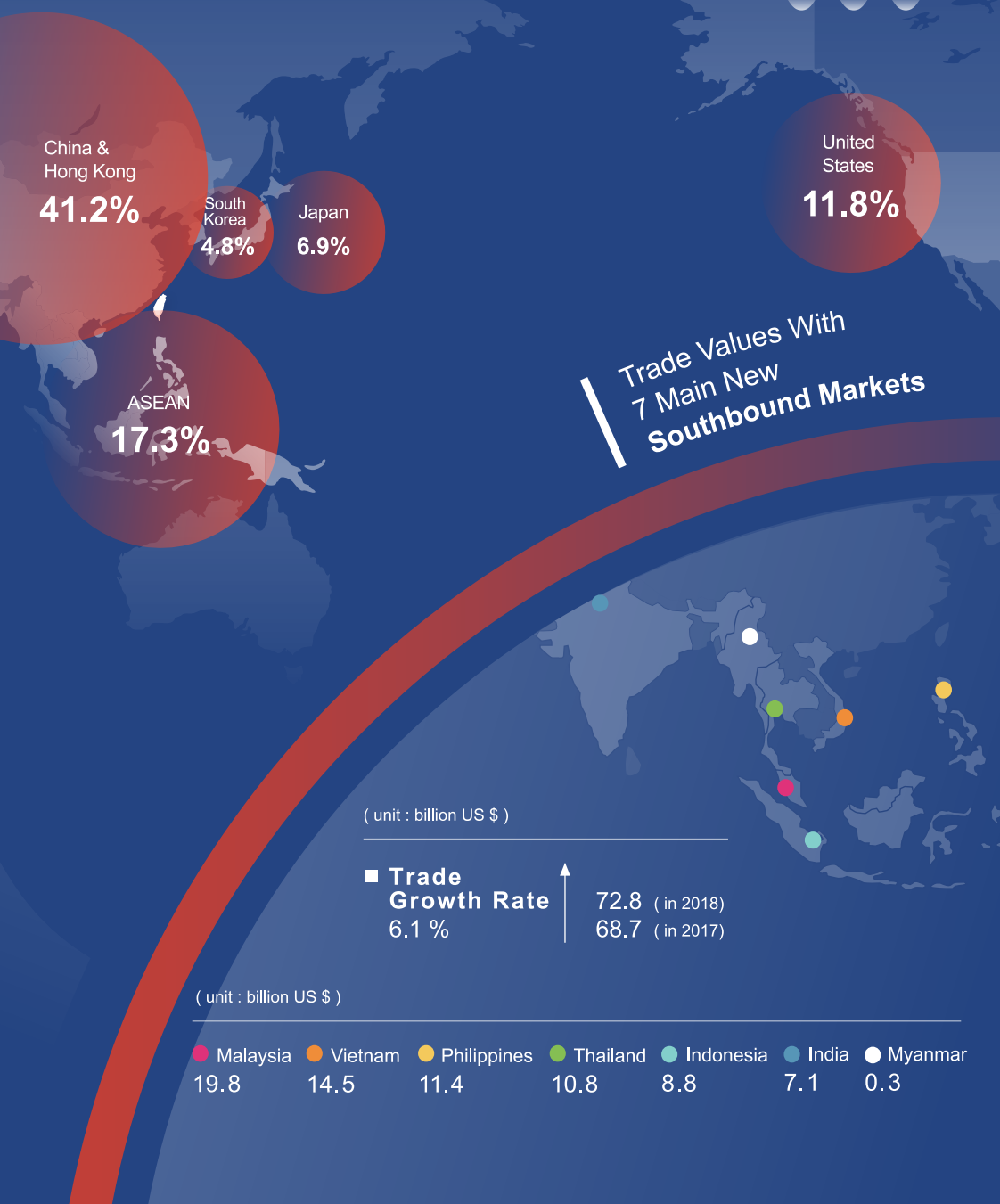
13th

Taiwan is ranked 13th in the "Doing Business 2019" survey by the World Bank.

■ World Competitiveness

17th 4th

Taiwan is ranked 17th in the 2018 Annual World Competitiveness Yearbook and 4th in the Asia-Pacific region.



Industrial Clusters



● Textile

● Healthcare

Taiwan is the main base for R&D of functional textile. Now, Smart of the developing priorities.

Taiwanese enterprises have a collaborative relationship with It makes Taiwan become a upstream medical devices and a global supply chain.

These clusters make Taiwan the location for procurement and

● ICT

● Sports & Leisure

The export amount of sporting sector reached US\$ 1.9 billion in

The A-Team (a team comprised of and parts companies) has created vative new products with high quality.

● Bicycles

● Machine Tool

Taiwan is one of the top exporting countries for machine tools.

Perfect growing environment, advanced breeding method and patent protection enhance the competitiveness of the orchid industry.

● Orchid

● Super Yachts

The success of Taiwan's yachts rests on three main points: high building skills, superior craftsmanship and customized solutions.

● Automobile Electronic

● Biomedicine

The auto electronics industry of Taiwan is founded on the strengths its well-developed ICT and auto parts industries. In 2018, the auto electronics industry reached an output value of US\$6.6 billion.

● Automobile Parts & Accessories

● Green Energy

Innovative medical devices and new marketing models driving and forming a complete production and service ecosystem.

● Fastener

The auto parts industry has the capability of providing original equipment (OE) and after market (AM) service to global supply chain.

The Photovoltaic industrial cluster development encompasses the complete supply chain.

Production accounts for 30% of all fasteners internationally and is exported to over 140 countries.

Industries In Taiwan



and production
Textile is one



1st 70%

Functional Textiles hold a 70% market share worldwide.

long
multinationals.
producer of
key link in the



1st

The world's 1st. mid-range and high-end mobility scooters exporting country.

"go-to"
design.



1st 68%

Taiwan's IC Foundries hold the largest market share in the world.

goods
2018.



1st 80%

80% of world's golf club heads are produced by Taiwanese companies.

20 bike
inno-



1st

Holds the largest import share in Germany, the Netherlands and UK.



7th

5th

The world's 5th machine tool exporting country. The 7th machine tool maker in the world.



US\$
173
million

The export amount of the Taiwan orchid reached US\$ 173 million.



4th

1st

The 4th builder country in the world and Asia's biggest maker.



Industries

Taiwan leads the world in

Intellectual Advantage

Education Level

44.5%

University or Above

30.6%

Senior High School

12.8%

Junior High School

12.1%

Primary School

University Ranking



Top 500 X 11

A total of 11 Taiwanese universities have made the world's list for the top 500 universities

Culture of Taiwan

Attractions In Taiwan

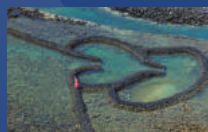
- International Airport
- High Speed Rail Station



New Taipei City-Jiufen



Taichung City-Dajia
Jenn Lann Temple



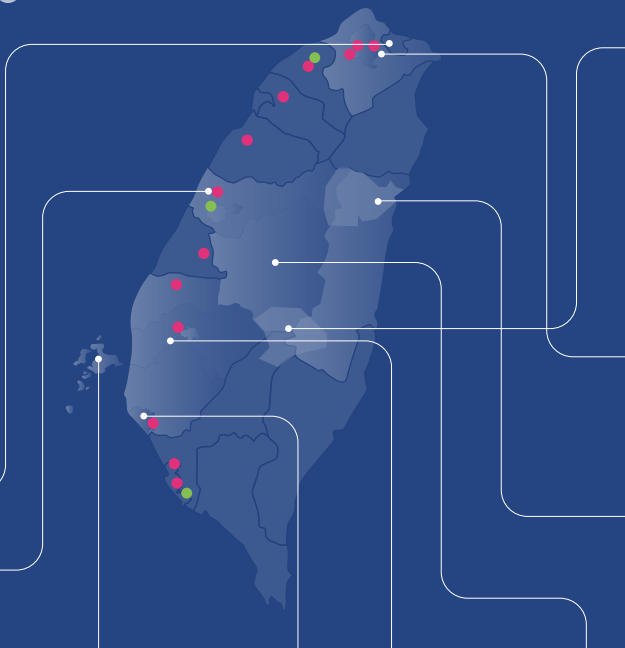
Penghu County-Cimei
Twin Hearts Stone Weir



Tainan City-
Chihkan Tower



Chiayi County-National
Palace Museum



JAN

**New Year's
Day**



FEB

Taiwan Lantern Festival

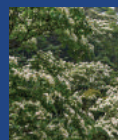
The sky lanterns of the festival carry the prayers and vows of the people.



MAR

**Taichung City Mazu
International Festival**

**The Tung
Blossom Festival**



APR

Festivals In Taiwan





Yushan National Park

Mt. Jade is the highest peak in East Asia (3952m)



Taipei City-National Palace Museum



Hualien County-Taroko National Park

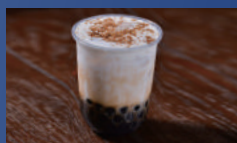


Nantou County-Sun Moon Lake



Tastes of Taiwan

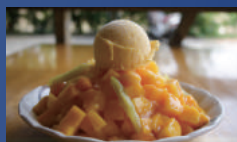
Taiwan's street cuisine is beloved by food enthusiasts around the world. One of the quickest ways to experience is to visit night markets.



Bubble Tea



Xiaolongbao (Steam Dumpling)



Shaved Ice Dessert



Braised Pork Rice



Pineapple Cakes



Zongzi (Rice Tamales)



Ba wan (Giant meat dumplings)



Oyster Omelet*



MAY

JUN

JUL

AUG

SEP

OCT

NOV

DEC

Dragon Boat Festival

It is one of Taiwan's three major annual traditional holidays. Dragon boat races are held, and people eat Zongzi (Rice Tamales) on Festival day.

Mid-Autumn Festival

On the Festival day, family members get together, see the full moon and eat moon cakes with pomelos.

Winter Solstice Festival

Main Events & Trade Shows in Taiwan

- Annual Trade Shows
- 2019 International Events



for more details of trade shows, please visit : www.taiwantradeshows.com.tw



The symbol of Taiwan Excellence honors Taiwan's most innovative products that provide tremendous value to users worldwide. All products carrying this symbol have been selected for specific Taiwan Excellence Awards based on their excellence in design, quality, marketing, Taiwanese R&D and manufacturing. Initiated by the Ministry of Economic Affairs (MOEA), R.O.C. in 1993, the symbol of Taiwan Excellence is recognized by 102 countries.



Bureau of Foreign Trade (BOFT), MOEA

The Bureau of Foreign Trade (BOFT) under The Ministry of Economic Affairs (MOEA), R.O.C. is responsible for implementing policies and regulations governing foreign trade and economic cooperation. Established in January 1969, BOFT's role and position have been adjusted regularly to meet the needs of the ever changing international economic and trade environments. The BOFT has been guiding and working with the Taiwan External Trade Development Council (TAITRA) in numerous trade promotion projects and activities both internationally and domestically. Having worked closely with TAITRA for many decades, BOFT continues to commission TAITRA for various critical government projects relating to business, trade and investments, while promoting Taiwan international-



Taiwan External Trade Development Council (TAITRA)

Founded in 1970 to help promote foreign trade, the Taiwan External Trade Development Council (TAITRA) is the foremost non-profit, semi-governmental trade promotion organization in Taiwan. Jointly sponsored by the government, industry associations, and several commercial organizations, TAITRA assists Taiwan businesses and manufacturers with reinforcing their international competitiveness and in coping with the challenges they face in foreign markets. TAITRA boasts a well-coordinated trade promotion and information network of over 1,300 international marketing specialists stationed throughout its Taipei headquarters and 68 branch offices worldwide. Together with its sister organizations, Taiwan Trade Center (TTC) and Taipei World Trade Center (TWTC), TAITRA has created a wealth of trade opportunities through effective promotion strategies.



**TAIWAN
EXCELLENCE**

Taiwan Excellence Pavilion

Taiwan Excellence Pavilion showcases the country's best innovations across industries. Located on 3F of Nangang Exhibition Center, the Pavilion is home to Taiwan Excellence Award winning products. Visiting Taiwan Excellence Pavilion is a visual feast for eyes and a physical experience for hands, combining technology with aesthetic design.

www.taiwanexcellence.org/en

www.taiwanexcellence.org/tw/pavilion

Taipei
Nangang
Exhibition
Center

Taiwan
Excellence
Pavilion
3F

MRT BL23 BR24
Nangang Exhibition
Center Station

3F, Hall 1, Taipei Nangang Exhibition Center
No.1, Jingmao 2nd Rd.,
Nangang District, Taipei City

Take Taipei MRT **Blue Line** or **Brown Line** to Taipei
Nangang Exhibition Center Station

Free Admission

Mon - Fri 10:00-18:00 &
Exhibition Days

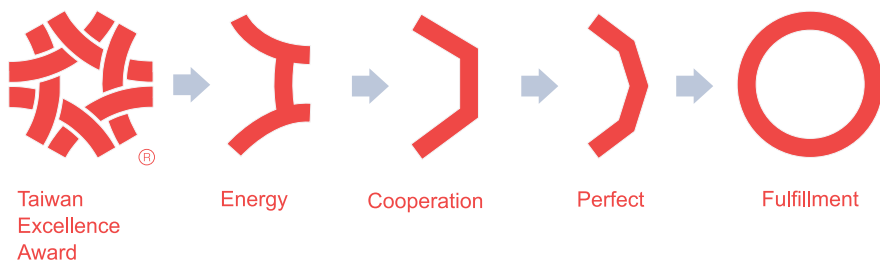


Taiwan Excellence

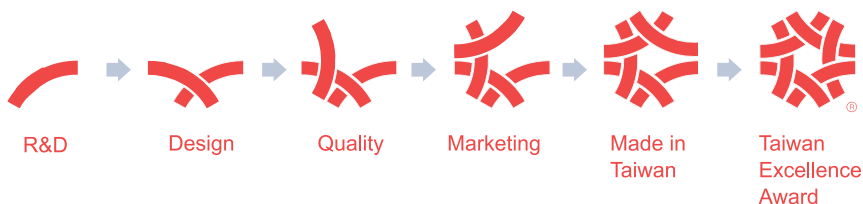


Taiwan Excellence Pavilion

Brand Connotation



Items of Selection



Taiwan Excellence shows the competitive “Innovative Value” of Taiwanese product. Initiated by Ministry of Economic Affairs (MOEA), R.O.C. (Taiwan) in 1993 and implemented by Taiwan External Trade Development Council (TAITRA). The symbol of Taiwan Excellence honors Taiwan's most innovative products that generate tremendous value to worldwide users and it is recognized in 102 countries.

The symbol endures 4 brand connotation. The first icon "Energy" represents the vigor that distinguishes Taiwan's local industries. The second icon "Cooperation" represents the bonds of solidarity that unite Taiwan's manufacturers. The third icon "Perfect" represents Taiwan's manufacturers pursuit of

perfection and excellence. The fourth icon "Fulfillment" owes its origins to the traditional Taiwanese cultural affinity for "completeness" or "wholeness".

The Taiwan Excellence Awards selection has been implemented to select annually the most innovative products based on their excellence in criteria including R&D, Design, Quality, and International marketing. Taiwan Excellence Awards are given to products that stand out the selection and show competitive “Innovative Values”. All award winning products are entitled to apply the Taiwan Excellence mark for marketing and promotional purpose. Award-winning companies are proud to embrace the mark as the highest honor of Taiwan national recognized and endorsed excellent products.

Event Calendar

Thailand
Bangkok



● Bangkok

The Schedule of Taiwan Excellence Events in Thailand

06/19 - 06/22

Bangkok Taiwan Excellence Pavilion at Manufacturing Expo 2019

09/20

Bangkok-Taiwan Smart Healthcare Seminar & Trade Meeting 2019

09/21 - 09/22

Bangkok Taiwan Excellence eSport Cup



PRODUCTS

Smart Machinery & Parts

21



DA JIE ELECTRICITY
MACHINERY INDUSTRIAL CO., LTD.

22



HIWIN TECHNOLOGIES CORP.

22



JEENXI TECHNOLOGY CO., LTD.

23



PALMARY MACHINERY CO., LTD.

23



SOLOMON Technology Corporation

24

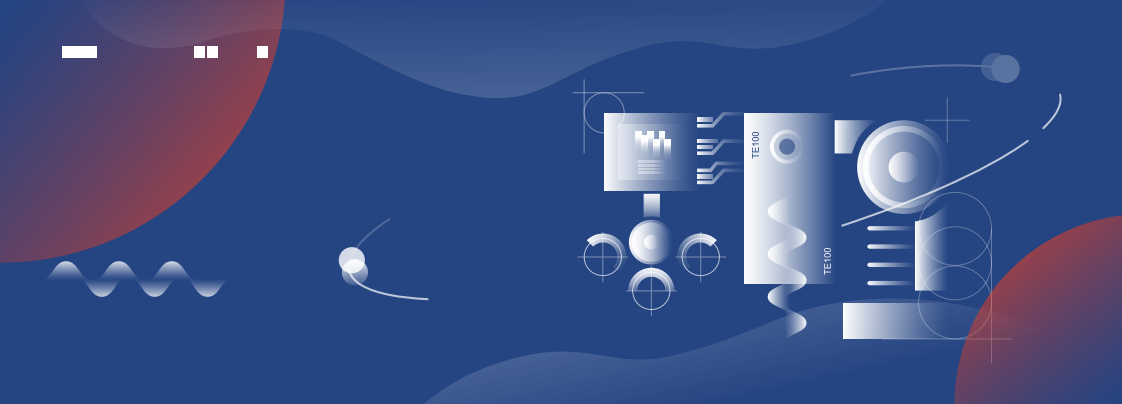


SHIN-YAIN INDUSTRIAL CO., LTD.

25



TBI MOTION Technology Co., Ltd.



26



Techman Robot Inc.

27



TOYO AUTOMATION
PRECISION CO., LTD.

Industrial ICT

27

ADVANTECH

Advantech Co., Ltd.

31

 **AXIOMTEK**

Axiomtek Co., Ltd.

32

Moldex3D

CoreTech System Co., Ltd.

32



ICP DAS Co., Ltd.

33


IEI Integration Corp.

IEI Integration Corp.

34



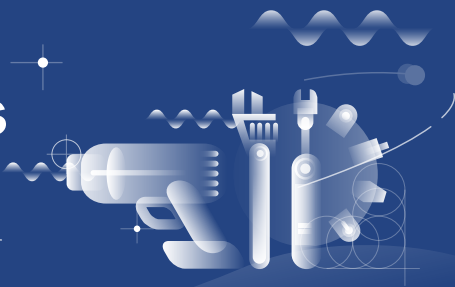
KILEWS INDUSTRIAL CO., LTD.

35


Sense The World

LIPS CORPORATION

Handtools & Lights



35



Xing Tai Guang Co., Ltd.

36



YIH CHENG FACTORY CO., LTD.



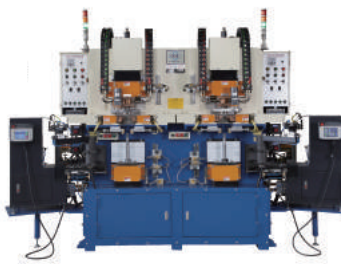
Da Jie Electricity Machinery Industrial Co., Ltd.

Next-generation power-saving and high-efficiency seam welding machine DJ-C2500

Innovative high-efficiency, power-saving & safety control system with humanized interface.

Automatic Electric Upsetter DJ-VHAC160

- Controllable: new operating interface
- Economic: 50% materials saved and 80% manpower saved.



Miniature Ballscrew SUPER-Z

Super Z is the miniature ballscrew with compact design and tangential recirculation. It is designed for industries of semiconductor, medical, photoelectric equipment, single-axis robots...etc.



TAIWAN EXCELLENCE
SILVER AWARD 2019



5-AXIS MACHINING CENTER UH-500

- The rotary table has better load capacity and can be modified with a DD motor to be the Mill-Turn Combined Machine.
- Used with A/C axis modules for lighter processing parts and the machining compensation stroke is the shortest.
- Equipped with a B-axis swinging head and a A-axis rotary table. When applied to fine parts, there is less interference angle.



TAIWAN EXCELLENCE
SILVER AWARD 2019



Vertical Grinder VIG-50

- High rigidity machine bed
The design of honeycomb Tubular tubul type machine bed and cross guideway structure for improving the higher rigidity and stability.
- Auto. tool change system (ATC)
Equipped with max. 6 no. grinding wheels for different diameter or accuracy requirement.
- High grinding efficiency
For end face grinding application, the wheel spindle can swivel to 22.5 degrees for easy grinding.
- High precision
The coolant flow has an isolation design from the machine bed and can reduce the heat deformation and dirt contamination on the bed.



AccuPick 3D SLM 3D-230

AccuPick 3D is an advanced 3D vision technology that enables robots to perform complicated pick-and-place tasks, such as randomly placed objects in a bin, or even when different object types are mixed together. Powered by deep learning, AccuPick 3D trains machines to recognize objects 8x faster than conventional method of pattern matching.

System set up is simplified through user-friendly GUI. State-of-art 3D optical module ensures picking is fast, accurate, and covers pick-up area as large as 2mx2m.

- Smart object recognition through AI
- Compatibility with major 6-Axis robot brands
- High accuracy, fast speed, intelligent algorithm





SHIN-YAIN INDUSTRIAL CO., LTD.

Solvision SLM VISAI-0230

STA SYNCHRONIZED TAPPING HOLDER 10.795

Solvision offers human-like, self-learning software to detect irregular patterns, defects or features typically challenging for conventional AOI software to inspect. All that's required is inputting tens of image samples to Solvision software for the deep learning software to distinguish and learn.

- Segmentation : allows users to examine objects at pixel level and can be used to detect and classify objects at finer level.
- Detection : scratches, cracks, stains or highly deformed characters can be detected with Solvision in supervised or unsupervised mode.
- Classification : objects can be classified based on their features, such as color or patterns.

- The special structure design provides compensation for the axial inaccuracy when tapping, improving the thread surface roughness.
- Modular design: tap holder body with adapter is modular design, lowering purchase cost.
- Can be used for coolantthrough tap.





SHIN-YAIN INDUSTRIAL CO., LTD.



TBI MOTION Technology Co., Ltd.

PNER COLLET CHUCK SYSTEM

16704

- Runout accuracy: within 3μ
- PN collet is well covered in PNER tool holder, improving overall runout accuracy and the machining stability.
- PNER improves the surface finish of workpiece, reduces the total processing time, extends the tool use life and prolongs the durability of machine spindle precision.
- Standard revolution: G2.5 25,000rpm, with an inspection report.

Single Axis Actuator KP Series

- Advantages of Modularized Design
- Loads from all Directions
- High Rigidity
- High Accuracy, Saving Space



TM5 TM5-700/TM5-900

The TM5, the world's first collaborative robot featuring built-in visual recognition from Techman Robot perfectly integrates hands, eyes and brains into one system, which impressively improve the easiness of using industrial robots and remarkably reduce the cost and deployment time.

- Smart: With our powerful built-in vision system, TM5 can see, think and work unitedly and smartly like human.
- Simple: Users can use hand-guiding function to teach robot every pose and point in the task. All-graphic flow chart based HMI allows people to use robots as simple as smart phones.
- Safe: TM5 complies with the ISO 10218 human-robot safety requirement.



TMflow TMflow

In the past, the industrial interface was always complicated and difficult to understand. The entry threshold is high, often giving a great amount of frustration to learners. The TM-Flow has made each tool module graphical and via the tablet, computer or smartphone, you can start to program the robot's tasks. This makes you get started painlessly, learn quickly and build a real main-machine collaborative environment.



Desktop Robot JTB

- Rigidity for Z axis Upgraded. Using screw drive for Z-axis can improve the rigidity, The movement track can remain stable at high speed, and the wobble time is greatly shortened at the time of stop.
- Multi-function operation. Using DXF path switch as path editing; then adapting CCD to support point teaching. Finally executing matrix + path editing by setting wizard enables teaching flexible and speedy.
- Equip with multiple COM Port, namely INPUT 16, OUTPUT /16, USB program backup Port, Multi-function display window and button of emergency stop, start and enforce dispensing



Embedded Automation Computers UNO-2484

- Intel® Core™ i7/i5/i3 Processor with 8GB DDR4 built-in memory
- 4 x GbE, 4 x USB 3.0, 1 x HDMI, 1 x DP, 4 x RS232/422/485
- Stackable 2nd layer for up to 4 iDoor extension or customize for domain applications
- Compact fanless design
- Ruggedized by zero cable and lockable I/O design
- Dedicated TPM2.0 microcontroller designed for hardware security
- Diverse system I/O and isolated digital I/O by iDoor technology
- Supports Fieldbus protocol by iDoor technology
- 3G/GPS/GPRS/Wi-Fi communication by iDoor technology
- S4Supports 30+ iDOOR combination with four main categories



Embedded Automation Computers UNO-2271

- Intel® Atom™ E3815/E3825 processor with 4GB DDR3L onboard memory
- 2 x GbE, 1 x USB 3.0, 1 x HDMI, option 2 x RS-232/422/485 or 3 x USB2.0
- Compact fanless design
- Rubber stopper design with internal reserved screws for 2nd layer assembly
- Diverse system I/O and isolated digital I/O by iDoor technology
- Supports Fieldbus protocol by iDoor technology
- 3G/GPS/GPRS/Wi-Fi communication by iDoor technology
- Supports 30+ iDoor combination with four main categories of smart factory applications
- 32GB eMMC storage onboard



Control Panel TPC-1251T-E3AE

- Industrial-grade 12.1" XGA TFT LCD with 50K lifetime and LED backlight
- Intel® Atom™ E3827 1.75 GHz dual-core processor with 4 GB DDR3L SDRAM
- Wide operating temperature range -20 ~ 60 °C (-4 ~ 140 °F)
- True-flat touchscreen with IP66-rated front panel/non-flat touchscreen with IP65-rated front panel
- Front-facing LED indicators to show operating status
- Durable touchscreen with 5-wire resistive touch control
- Supports Advantech' s iDoor technology for integrating optional accessories
- Compact, fanless embedded system with aluminum alloy front bezel and chassis grounding protection
- Supports Advantech' s SNMP Subagent software
- Supports Advantech' s WISE-PaaS-/RMM remote management software



Wireless I/O Module WISE-4012

- 4-ch universal input and 2-ch digital output
- 2.4GHz Wi-Fi reducing the wiring cost during big data acquisition
- Easily extend the existing network by adding APs, and share existing Ethernet software
- Configured by mobile devices directly without installing any software or Apps
- Zero data loss using the log function with RTC time stamp
- Data can be automatically pushed to Dropbox or computer
- Supports RESTful web API in JSON format for IoT integration



Embedded Automation Computers MIC-7700

- Intel® 6th/7th Gen Core™ i CPU socket-type (LGA1151) with Intel® Q170/
- H110 chipset
- Wide operating temperature (-10 ~ 50 °C)
- VGA and DVI output
- 2 x GigaLAN and 8 x USB 3.0
- 2 x RS-232/422/485 and 4 x RS232 serial ports
- 1 x 2.5" HDD/SSD, 1 x CFAST, and 1 x mSATA
- 9 ~ 36 VDC input power range
- Supports 2 x LAN, isolation COMs, and 32-bit GPIO modules
- Supports Advantech i-Modules
- Supports Advantech SUSIAccess and embedded software APIs



Expansion Module for MIC-7000 Series MIC-75M20

- Flexible expansion via PCIe/PCI slot
- MIC-7000 series compatible
- Optional smart fan for thermal optimization
- Provide additional 12Vdc power source for add-on card
- Maximum 85W for add-on card power consumption
- 2.5" storage bays for HDD/SSD expansion
- Hot Swappable HDD/SSD supported



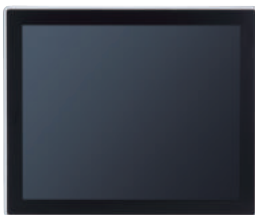
Equipment Connectivity Solution SRP-FEC220

- 100% Data Acquisition
- Easy Protocol Conversion
- Connect OT to IT



Heavy-duty Fanless Touch Panel PC GOT3177T-311-FR

- 17" SXGA TFT flat resistive touch
- Fanless and modular design
- Intel® Pentium® processor N4200 (Apollo Lake-M)
- 2.5" SATA HDD and mSATA
- WLAN module & antenna (optional)
- 2 Gigabit LAN, 2 USB 2.0, 2 USB 3.0, 4 COM ports and 1 PCIe riser card expansion slot (optional)
- IP65-rated front bezel
- Supporting panel mount and VESA arm/desktop stand/wall mount (optional)



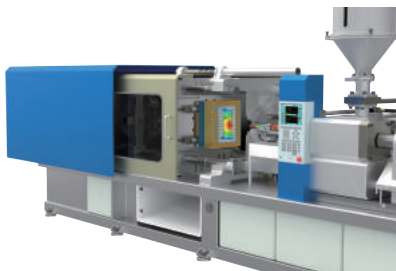
Rugged IP67-rated Fanless Edge System eBOX800-900-FL

- IP67-rating for outdoor use
- NVIDIA® JETSON™ TX2 with Pascal™, 256 CUDA cores GPU
- High AI computing performance for GPU-accelerated processing
- From -30 ° C to +60 ° C operating temperature range
- 100 to 240 VAC wide range power input with 10kV surge protection
- 4 N-jack antenna openings with water proof design
- Features M12 lockable I/Os
- 1 IEEE 802.3at GbE LAN port (30W)
- Rich I/O options for customized designs and mission-critical projects



Moldex3D R17

Moldex3D is the world leading CAE product for the plastic injection molding industry. With the best-in-class analysis technology, Moldex3D can help you carry out in-depth simulation of the widest range of injection molding processes and to optimize product designs and manufacturability. In addition, its high compatibility and adaptability have provided users with instant connection to mainstream CAD systems, generating a flexible simulation-driven design platform



WISE Monitoring IoT Kit; WISE-5231 WISE-5231

- Runs on browsers, no extra software tool is required.
- No more programming, user-friendly web pages are provided for building the IoT Cloud system.
- Ready-to-run IoT Solutions: Includes an Intelligent Sensor Concentrator, a Temperature/Humidity module, an I/O module, and Microsoft Azure service.
- Completed Application Scenario: sensor data collection and Real-time automation control can be performed at the field-site, and the data can be transferred to Microsoft Azure IoT platform for analysis.





ICP DAS Co., Ltd.



IEI Integration Corp.

Power Management IoT Kit PMC-5231

- Runs on browsers, no extra software tool is required.
- No more programming, user-friendly web pages are provided for building the IoT Cloud system.
- Ready-to-run Energy monitoring and management IoT Cloud solution: Includes an Intelligent Power Meter Concentrator, a power meter, and Microsoft Azure service.
- Completed Application Scenario: the power consumption measurement, power demand management and alarm notification can be performed at the field-site, and the power data can be transferred to Microsoft Azure IoT platform for energy using analysis.
- Flexible integration with the power meter to measure the power consumption of the devices by Modbus protocol.
- Flexible power demand management, data logger and alarm notification functions at field site.
- Seamless integration with Microsoft Azure IoT service without programming.



15" Heavy Industrial Panel PC PPC-FW15C-Q370

- Explore AI solutions for AOI defect classification and machine vision for sorting and grading of agricultural products
- 15" Panel PC with 8th Generation Intel® Core™ i7/i5/i3 and Pentium® processor
- Four hot-swappable and accessible HDD drive bays, support RAID 0/1/5/10
- High flexibility to support two PCIe 3.0 by 4 and two PCIe 3.0 by 8 slots
- Dual M.2 2280 PCIe Gen 3.0 x4 NVMe™ SSD support
- IP66 robust design of front panel



Superior Rugged 15" Panel PC INOX-F15C-ULT3

- IP69K high pressure and high temperature protection to suitable in the harsh environment
- It is well apply in food processing, pharmaceutical and medical and logistics markets
- 15" fanless panel PC with Intel® Skylake ULT processor
- SUS304 stainless steel housing and support M12 connections
- Operating temperature : -20 ° C ~ 50°C
- Flat glass PCAP touch with 6H hardness, resistive touch window
- Accessible HDD Bay

Torque Read Out Controller KL-CTDS

- Monitor fastening thread range
- save up to 99 programs
- Monitor fastening time range /fastening torque range
- Auto learning
- Torque offset setting
- External start/reverse/disable tool/confirm
- I/O signal (Optocoupler)
- RS-232 interface for data output, storage and use with barcode scanner



3D camera LIPSedge® DL

- Depth + RGB Data
- XY Resolution native QVGA @30fps, upscale to VGA 640×480
- Depth FOV: H74.1xV57.5xD92
- 2xEEL Laser@850nm
- RGB Resolution: FHD@30fps
- FOV: H74.2xV58.1xD88
- Developer Friendly
- Free SDK (OpenNI/ OpenCV Compatible) Download & Support from LIPS
- Hardware Customization Available from LIPS

Optical CMH Street Lights XTGL-0105

High color rendering index (RA), Full spectrum, Full cover luminaire

- Have high rendering index , safety for road user.
- Enhance the clarity lighting system and reduce the darkness corner.

Part of the light can be replace and easy to order

- upgrade bulb and replace if necessary.
 - Less the risk of supplier in maintenance management.
- Simply maintenance and all watts included.
- Perfect substitute system.
 - Lower the effectively management costs.
 - 20 years life span design.



XTGL-0703 LED High Bay Light

XTGL-0703

- Have high rendering index , safety for road user.
- Enhance the clarity lighting system and reduce the darkness corner.
- Full cover luminaire can lower the glare."



7 in 1 MULTI BIT RATCHET SCREW-DRIVER

T2007MB/T2007SMB

Lean lead to innovalue. Lancer dedicated MIT 7in1 MULTI BIT RATCHET SCREWDRIVER , High torque ratchet mechanism, Newly developed SVCN+ steel Torque over 20% , and 3-mode Ergonomic dual-material handle.



[illegible]



[illegible]

A nighttime photograph of the Taipei skyline, featuring the Taipei 101 skyscraper as the central focus. The tower is illuminated with green lights and has a bright red and white light at its peak. The surrounding city is filled with numerous other lit-up buildings and streets, creating a vibrant urban scene.

Welcome to Taiwan



**TAIWAN
EXCELLENCE**



Organized by  Bureau of Foreign Trade, MOEA

 Taiwan External Trade Development Council



Facebook



Taiwan Excellence



Where to buy

Taiwan Trade Center, Bangkok

Unit 1204, 12th Fl., GPF Witthayu Tower A, 93/1 Wireless Road,
Pathumwan, Bangkok 10330, Thailand

Tel : +66 - 2 - 6514470

